

Real World Solution for Flooring Needs

Customer: Chaminade High School Athletic Center - Long Island, NY

Industry: Education

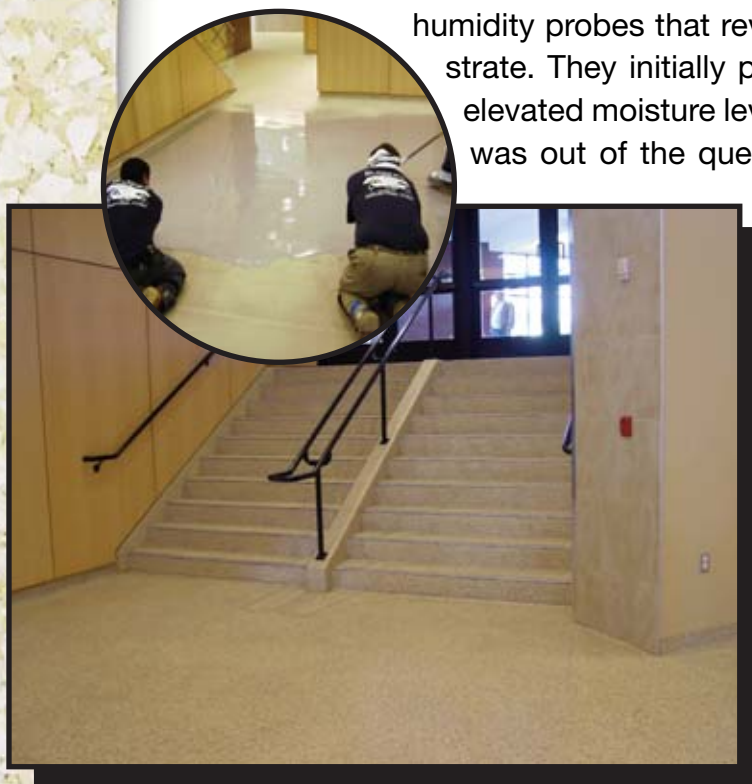
Products:

- Main Lobby, additional lobby and mezzanine level was Poly-Crete MD with macro flake, Cryl-A-Glaze 201 with macro flake and two finish coats of Cryl-A-Top 301.
- Wrestling Room Area was Poly-Crete MD with micro flake, Cryl-A-Glaze 201 with micro flake and two finish coats of Cryl-A-Top 301.
- Locker Rooms were Poly-Crete MD with quartz, Cryl-A-Glaze 201 with quartz and two finish coats of Cryl-A-Top 301.



Chaminade (shah-me-nod) High School on Long Island in Mineola, New York is a well respected and prestigious Catholic High School for young men in grades 9-12. They recently completed a \$30 million athletic facility funded by alumni donations and called on John Russo of Blendex Industrial Corp. to install all their poured floors.

A few weeks before the installation was scheduled to begin, a product called "Dryteck" was installed by another company to bring the floor up to the correct level throughout the facility. A few weeks later, John performed calcium chloride tests and multiple relative humidity probes that revealed elevated moisture levels in the substrate. They initially planned to install an epoxy system but the elevated moisture levels revealed from the tests proved that this was out of the question. They waited a few weeks to let the floor cure but after additional moisture testing the results still showed levels too high for an epoxy installation.



Blendex contacted Steve Lipman, Urethane Product Manager at Dur-A-Flex, Inc. and Metro New York Sales Representative, Michael Broadie for advice on alternatives because they had already postponed the original start date for the install, and obviously a multi-coat epoxy system would not be completed on time for the school's opening.

The decision was made to install Poly-Crete because it would take care of the moisture concerns, but using a urethane topcoat would take time to cure, and time was a luxury they did not have. Twenty other trades were waiting to do their jobs so Blendex decided to finish the system with MMA to be able to complete each section from prep to finish in a few days

PERFORMANCE FLOORING SOLUTIONS

DUR-A-FLEX® Inc.

EPOXIES • MMA • URETHANES
COLORED QUARTZ AGGREGATES

Real World Solution for Flooring Needs

instead of weeks. 24 hours after each section was completed, the other trades were then able to get back on the floor and the next area could be cleared and started. The rush to complete the project was felt by all the trades. The school administrator, Father James stressed that they all work together and when help was needed he would have up to 30 students on site at a moments notice to help clear areas or move materials. The faculty and students were instrumental in all phases of the project - this was truly a hands-on project for the students and faculty as well.



According to John, by using this system they were able to:

1. Provide a system to handle the elevated moisture levels.
2. Install a system that would not tie these areas up for extended periods and offered a rapid turn around for trades to get back in, complete their work and meet all deadlines for the opening.
3. Provide varying looks as well as textures in different environments to meet the customer's requests.
4. Provide a cost effective alternative to terrazzo saving the customer money.



Blendex completed the entire job in less than two weeks and all deadlines were met. The day they finished the project was the day of the opening. Father James was so pleased with the project that after the job was completed he invited every trade to a cocktail reception to say thank you for a job well done.

