

CRYL-A-FLEX Applications

Product: Cryl-A-Shield
Customer: Pinnacle SA, Guatemala City, Guatemala
Industry: Textile
Date: November 1999, January 2000

PROBLEM:

The existing concrete floor in the sewing, embroider, pressing, computer and QC rooms all have a similar problem with concrete dusting and poor overall appearance. The owner is looking for a minimum down time, long term solution to this problem. There is 50,000 SF to be addressed.

SOLUTION:

Cryl-A-Shield (MMA) is the Dur-A-Flex system selected because of its ability to penetrate/bond to the substrate, speed, full cure in 1 hour, easy application and cost effectiveness.

The procedure is to first prepare the concrete using a shot blaster. A 15-mil roller coat of Cryl-A-Prime P-101 is then applied. Crack repair and patching of the substrate is done. Finally, two 15 mil pigmented coats of Cryl-A-Top T-301 are roller applied. A few hours after the final topcoat the equipment is moved back into the area and full production resumes the next day. The first 20,000 SF phase of the project is completed in November and the second 28,000 SF is done in January 2000.



CRYL-A-FLEX

Applications

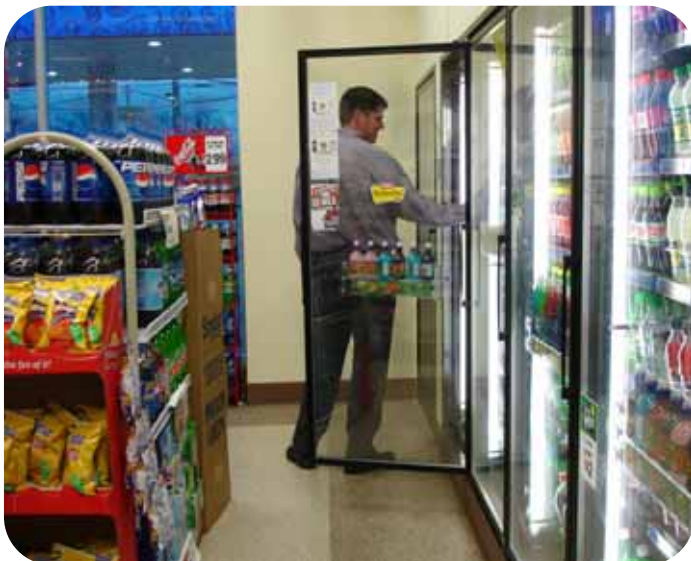
Product: Cryl-A-Chip & Cryl-A-Shield
(with random chip)
Customer: Get Go, Somerset, PA
(various other locations)
Industry: Gas Station/Convenience Store
Date: July 2003

PROBLEM:

The owner was looking for a flooring system that would meet the demands of a fast track construction schedule, stay within budget and have a very long service life with minimum maintenance. Since the stores were being constructed throughout the winter (with little or no heat), the system had to be capable of being installed over a wide temperature range.

SOLUTION:

The product that met all the requirements was the MMA based seamless flooring from Dur-a-flex. Two systems were used to meet budget requirements. In the retail area and bathrooms, a Cryl-A-Chip floor was used and in the backroom a Cryl-A-Shield coating with a random chip broadcast was installed. The Cryl-A-Chip system is composed of a primer, a double broadcast of decorative colored chips and two topcoats. Cryl-A-Shield is made up of a primer coat, a pigmented topcoat with the random chip broadcast and a single, clear top coat. The schedule was always met as each coat cured fully and was ready to use in less than one hour, MMA based resins can be installed in below freezing temperatures.



CRYL-A-FLEX

Applications

Product: Cryl-A-Shield
Customer: Woodway Country Club, Stamford, CT
Industry: Recreation
Date: April 1999

PROBLEM:

The existing coating had failed, chipped, pealed, lost its color and is very slippery when wet. The Club's Board of Directors is in need of an aesthetic coating that is UV resistant, long lasting, good slip-resistance and is salt spray resistant as this is located on the ocean.

SOLUTION:

The answer to their problems is the MMA based coating system, Cryl-A-Shield. The failed coating is removed and the concrete substrate is prepared by shot blasting. A coat of Cryl-A-Prime P-101 is roller applied with a light broadcast of grit. Next two topcoats of Cryl-A-Top T-301 is roller applied. The patio is open for service the next day.



CRYL-A-FLEX

Applications

Product: Cryl-A-Shield
Customer: Consolidated Freight, Harrisburg, PA
Industry: Trucking Maintenance Shop
Date: June 1999

PROBLEM:

The problem is the re-fueling area in the shop. Diesel fuel spills result in a very slippery/hazardous situation. Other anti-slip products were tried but all failed because the facility has a very short down time (less than a day) and they are never able to cure fully before being open to traffic. What is required is a material that will achieve a full cure in 1 hour and be chemically resistant to fuel, acid, oil and anti-freeze. With good anti-slip properties and be cost effective.

SOLUTION:

The answer to all these needs is the MMA based Cryl-A-Shield system because it is fully cured in 1 hour and has the required chemical resistance. Two bays, 2,500 SF are given to the installation contractor at 9 AM. The area is shot blasted. Cryl-A-Prime P-101 is roller applied at 100 SF/Gal and # 16 grit broadcast into the wet material at 50 % coverage. A second/finial pigmented coat of Cryl-A-Top T-301 is also roller applied at 100 SF/Gal. The job is complete and the trucks are ready to roll over the surface by 4 PM that afternoon.



CRYL-A-FLEX

Applications

Product: Cryl-A-Shield
Customer: Indian River Transportation, Winter Haven, FL
Industry: Orange Juice Transporter
Date: March 2000

PROBLEM:

Indian River Transport built a 5,000 SF facility to wash 100 tankers per day. The citric acid and chemicals used to wash the tankers was attacking the concrete. There is also an issue with the area being very slippery. A system is needed that could be installed and not interfere with the operation.

SOLUTION:

The solution to all of the issues is the Cryl-A-Shield (MMA) system from Dur-A-Flex. With this system 2 of the 4 wash bays could be done one day and the other two were coated the next day. In this way the wash down operation could be kept in service. The system consisted of shot blasting the concrete.

Then a coat of Cryl-A-Prime P-

101 is applied into which a light broadcast (25 % coverage) of a coarse is used. Forty minutes after this application the first of two pigmented top-

coats is applied. An additional broadcast is put into the first topcoat. The bays are ready for service 1 hour after completion of the installation.



CRYL-A-FLEX

Applications

Product: Cryl-A-Quartz, Q-11 and Cryl-A-Shield (Line Stripes)
Industry: Instant Oil Change, over 95 Locations
Date: 1998-Present

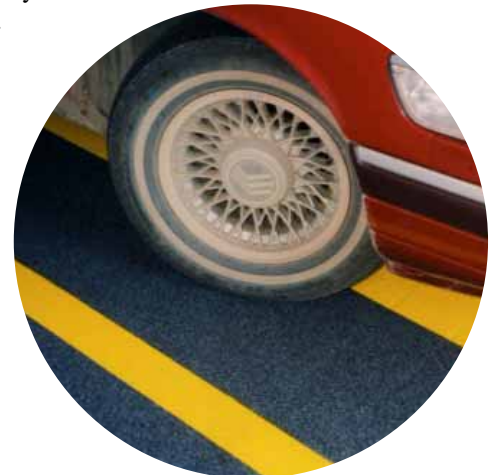
PROBLEM:

Existing facility floors have become worn, look shabby and become slippery after year of use. Customer is looking for a floor that will be anti-slip in this oily environment, bright yellow line stripes for safety, look great for the corporate image and accomplish this without closing the facility.

SOLUTION:

The successful solution for the 95 plus Instant Oil Change facilities has been the Cryl-A-Quartz MMA based flooring system by Dur-A-Flex. Cryl-A-Quartz is installed using the larger Q-11 colored quartz aggregate for a high degree of anti-slip properties. The yellow safety line is produced with the Cryl-A-Shield pigmented coating. And most important to the owners the 1,600-3,000 SF floor is installed overnight, therefore never having to lose

one dollar of income. The shot blast preparation begins at 5 PM when the facility closes. Overnight the area is primed, cove base installed, double broadcast of Q-11 aggregate, 2 topcoat and line stripes painted. Because of the fact that the system is based on Dur-A-Flex's fast cure MMA resin, each coat achieves full cure in less than 1 hour the floor is ready for the first vehicle at 8 AM.



CRYL-A-FLEX

Applications

Product: Cryl-A-Chip with Cryl-A-Shield Accent Stripes
Customer: Modesto Center Plaza, Modesto, CA
Industry: Convention Center
Date: August 2001

PROBLEM:

The 20 year old 16,100 SF floor of the Harvest Hall is in need of a face-lift. The original stained concrete floor is discolored, difficult to clean and the coating is peeling. The facility managers are looking for a highly decorative and easy to clean floor with a long service life. Therefore prior to the project being let a number of samples are installed from which the Cryl-A-Chip system was chosen. The project also has to be completed in a one-week window.

SOLUTION:

The solution to the problem is MMA resin based systems from Dur-A-Flex, Cryl-A-Chip (Olive Beige) and the Cryl-A-Shield (Stone Gray) for the 18 inch wide accent stripes. The reasons for choosing these systems are: very decorative, tough enough to resist the everyday demands in this environment, easy to keep clean and because the material cures to full strength in one hour the project can be completed on schedule.



CRYL-A-FLEX

Applications

Product: Cryl-A-Shield
Customer: Thornwood Manufacturing, Phoenix, AZ
Industry: Furniture Manufacturer
Date: August 2001

PROBLEM:

A 10,000 SF area of the assembly area at Thornwood Manufacturing needed a new surface for their concrete floor. The original concrete floor is difficult to clean and has a dusting problem. The facility manager is looking for an easy to clean floor with a long service life that could be installed over night so as not to interfere with a tight production schedule and of course within their budget.

SOLUTION:

The solution to the problem is a simple yet tough 2 coat Cryl-A-Shield MMA resin based system from Dur-A-Flex. The system is composed of 2 coats of Cryl-A-Prime P-101 with the addition of Cryl-A-Bond in the first coat. The main reasons for choosing this system is that it is tough enough to resist the everyday demands in this environment, easy to keep clean (wood glue does not stick to it) and allows the furniture to be easily slid around. Due to the fact that the material cures to full strength in one hour there is sufficient time over night to accomplish the necessary surface preparation, install the 2-coat system and have the floor ready for production at 7 AM.

