

# CRYL-A-FLEX

## Applications

**Product:** Cryl-A-Chip SL  
**Customer:** Publix Supermarkets, Inc., Palm Beach Gardens, FL #179  
**Industry:** Grocery Store  
**Date:** August 2000

### PROBLEM:

Publix Supermarkets have been using methyl methacrylate (MMA) based floors in their stores for many years. These floors have proven to be a cost effective alternative to terrazzo and vinyl tile because of the fast cure and low maintenance. Publix's concern is that they only had one supplier of the MMA flooring system and therefore questioned if they are getting the best price.

### SOLUTION:

The solution for the entire 30,000 square feet of retail space is Dur-A-Flex's MMA based flooring system. Dur-A-Flex gives Publix's and their contractors a choice of suppliers for the material they want. This choice has resulted in cost savings and higher quality flooring.



# CRYL-A-FLEX

## Applications

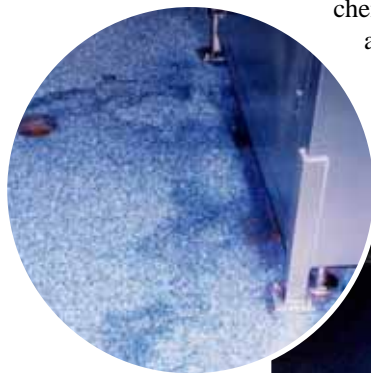
**Product:** Cryl-A-Chip SL  
**Customer:** Poly Medica Pharmaceuticals (USA), Inc., Woburn, MA  
**Industry:** Pharmaceutical Production  
**Date:** August 2000

### PROBLEM:

There are puddles, water did not flow to the drains and the light color made it difficult to keep the floor looking good. The owner wanted a heavy-duty floor to handle the environment. The new floor had to be installed and ready for use in one day so as not to interfere with production.

### SOLUTION:

Since the existing 8-year-old floor is a methyl methacrylate (MMA) based system, it is a simple matter to correct the pitch to the drains and install a new MMA system. This is due to the feature that MMA always forms a chemical bond to itself, even after years of service. The owner chose the Cryl-A-Chip SL with a dark blue chip broadcast. The floor was washed with Cryl-A-Clean (MMA) to remove any wax or dirt. The new floor was installed, completely cured and ready in one day.



# CRYL-A-FLEX

## Applications

**Product:** Cryl-A-Chip SL  
**Customer:** Publix Supermarkets, Inc., over 150 stores have been done  
**Industry:** Grocery Store  
**Date:** 2000-Present

### PROJECT:

The entire sales area (30,000-40,000 square feet) are receiving the Cryl-A-Chip SL seamless flooring system. This system is a proven winner for supermarkets. The quick cure, 1 hour, benefits the fast track construction schedule and results in opening the store up to 3 weeks earlier than using other flooring systems. Life cycle costing has shown the floor to pay for itself in 7 years. Cryl-A-Flex floors also save \$1.00 per square foot per years because they require no waxing or stripping.



# CRYL-A-FLEX Applications

**Product:** Cryl-A-Chip SL & Cryl-A-Tex for leveling  
**Customer:** Orthopaedic Surgery Center of Idaho,  
Boise, Idaho  
**Industry:** Healthcare  
**Date:** July 2006

## PROBLEM:

After the owner had moved into their newly built facility they discovered that they had a major problem with the concrete. Specifically the floor was not flat. It was actually so bad that if left unattended a gurney or wheel chair would roll across the room. A survey of the floor flatness revealed that in some of the rooms the floor had a difference in elevation of over 2.5 inches. There was approximately 6,200 SF of floor that had to be leveled and 600 feet of cove to be installed. And of course the floor had to be fixed with as short of shut down as possible.

## SOLUTION:

It was determined that the fastest way to get the problem rectified and get the facility back into operation was with the use of Dur-A-Flex's MMA based materials. First the high spots in the building had to be located. Then a laser was used to set new elevations to which the floor was leveled to. The leveling was done with Cryl-A-Tex, an MMA based polymer concrete. This material cures in one hour. The owners wanted a floor that would be seamless, low maintenance, and work in a hospital environment. It was determined that a 3/16 inch thick Cryl-A-Chip SL floor would be the perfect solution. This system also meets all the USDA/FDA requirements and is NSF registered.



# CRYL-A-FLEX Applications

**Product:** Cryl-A-Chip SL & Cryl-A-Chip  
**Customer:** The Washington Animal Rescue League,  
Washington, DC  
**Industry:** Animal Care  
**Date:** Summer 2006

## PROBLEM:

The Washington Animal Rescue League had a vision, to build a facility that is "A New Global Standard for Animal Care". This vision includes light-filled rooms and a tranquil environment not associated with your typical animal shelter with a modern state-of-the-art medical center. The challenge was to expand the existing facility while it was still in operation. And to use a flooring system that would meet the wide demands of such a facility from animal housing, medical treatment and offer an inviting atmosphere for potential adopters.

## SOLUTION:

After an extensive search by the owner, it was determined that all of the required criteria could be met with MMA based seamless system from Dur-A-Flex. The system of choice was the very decorative chip system with colors to compliment other colors being used. A combination of chip system was used, a 3/16 inch thick Cryl-A-Chip SL was used in all the medical facility, hallways, and support areas. The double broadcast Cryl-A-Chip was used for the glass walled cage areas as the floors had a very steep slope to drain there. The facility is a show place and a model for others.



# CRYL-A-FLEX

## Applications

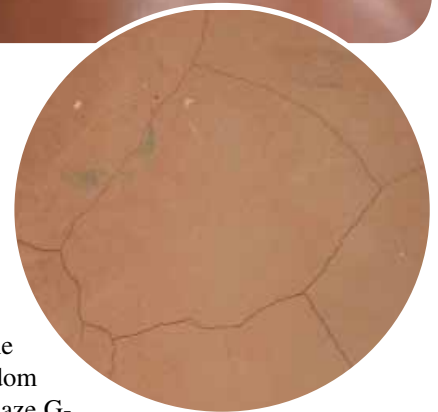
**Product:** Cryl-A-Chip SL with Fiberglass  
**Customer:** Trader Joe's, Chicago, IL  
**Industry:** Grocery Store  
**Date:** December 2006

### PROBLEM:

Trader Joe's is a repeat user of Dur-A-Flex's MMA based Cryl-A-Chip SL seamless flooring. The product has been installed in many of their location around the country. This location had a special challenge due to the fact that the new concrete floor had many cracks after being installed. The store/building is new construction. A 4 inch slab was poured over a double T precast deck that is the roof of a parking garage. Control joint were installed on 15 foot centers but still every slab had multiple cracks. The owners were concerned that whatever they used for an overlay would reflect these cracks.

### SOLUTION:

This type of situation has been encountered before and a very success solution has been used. The concrete floor was prepared (shotblasted) as usual. The floor was then primed with Cryl-A-Prime P-101 (MMA). The cracks were then filled with an MMA slurry. The entire floor was then covered with a 7 ounce random weave fiberglass and was saturated with Cryl-A-Glaze G-201. The finish floor, Cryl-A-Chip SL was then installed over this. The floor has been functioning perfectly with no cracking.



# CRYL-A-FLEX

## Applications

**Product:** Cryl-A-Chip SL  
**Customer:** Michigan Humane Society,  
Westland Berman Center for Animal Care  
**Industry:** Animal Care  
**Date:** January 2005

### PROBLEM:

A seamless flooring system was required for a major expansion/renovation for the Michigan Humane Society. The Humane Society Director confessed to being “extremely particular” about who performed the installation and what system was going to be installed in their new animal care facility. They were looking for state-of-the-art materials that would have a long service life and meet the demands of the facility.

### SOLUTION:

Dur-A-Flex’s MMA based Cryl-A-Chip SL system which provides a decorative terrazzo-like appearance, with the added benefit of a seamless floor, was picked partly because of its fast cure (full cure in one hour) and high strength capabilities. After three years of research to find the best flooring solution the Chief of Operations went so far as to say “MMA is arguably the best product to install in an animal care facility. The system bonds well to concrete and the coefficient of friction is easily adjusted.” The Cryl-A-Chip SL system was installed in the animal holding rooms, dry runs, and cat holding areas.

