

CRYL-A-FLEX

Applications

Product: Cryl-A-Chip
Customer: Venture Industries, Grand Blanc, MI
Industry: Automotive Plastic
Date: August 1999

PROBLEM:

This project is a re-coat of 50,000 SF of a 10-year-old MMA double broadcast chip floor. The plant has a one-week summer shut down to complete this and other flooring projects. The area has to be completed in 3 days as storage racks and equipment has to be moved back into the area. There are 2 colors of floors, black, gray and white and a solid yellow lane.

SOLUTION:

The first step in the project is to clean/prepare the substrate. There is a very heavy wax build-up. Therefore the quickest and most economical solution is to do a brush shot blast. Next a roller coat of white Cryl-A-Glaze G-201 is applied into which the decorative Macro chips are broadcast. This cures in less than 1 hour and a topcoat of Cryl-A-Top T-301 is applied. Because the owner requires a very smooth surface, the total is sanded and the dust vacuumed. The final topcoat of T-301 is applied. The yellow aisles are completed with the same procedure.



CRYL-A-FLEX

Applications

Product: Cryl-A-Chip
Customer: A & W/Chevron Service Station, Redmond, OR
Industry: Fast Food, Self Service Gas Station
Date: May 2000

PROBLEM:

A new 2,500 SF Chevron self service gas station and A & W Restaurant with drive thru required a easy to clean, attractive, versatile and long service life floor. The floor is to be used throughout the facility, service area, kitchen, dish wash area and bathrooms. It is determined that the typical approach to use vinyl tile did not meet the upscale look the owners wanted to project.

SOLUTION:

The solution is to use Cryl-A-Chip (MMA) double broadcast decorative colored chips. This system not

only gives the desired “terrazzo” look but also helped to maintain a tight construction schedule. The fast cure of the system, 1 hour for each coat meant the entire project could be done in a couple of days. The floor is fully functional 1 hour after the last topcoat allowing the other trades and equipment to be installed the next day.



CRYL-A-FLEX

Applications

Product: Cryl-A-Chip
Customer: Ralston Valley High School, Jefferson County, CO
Industry: Public School
Date: June 2000

PROBLEM:

The county school system has a long track record of successful installations with methyl methacrylate (MMA) based seamless flooring. The concern is that they were only aware of one source for the material. Therefore were they paying a fair price for the system?

SOLUTION:

The solution was to offer the school system an alternate source for the material and certified installers. The result is an approximate 20 % saving with the Cryl-A-Chip on this 8,000 SF area. Cryl-A-Chip flooring with integrated cove is installed in the kitchen, bathrooms and locker rooms of the school.



CRYL-A-FLEX

Applications

Product: Cryl-A-Chip
Customer: McDonalds, Mesa, AZ
Industry: Fast Food, Play Land
Date: July 2000

PROBLEM:

The 1,500 SF play land area rubber tile floor had failed, was lifting and a safety hazard. The floor was also difficult to keep clean and all the seams were dirty.

SOLUTION:

The solution is to remove the existing tile floor and install a Cryl-A-Chip (MMA) floor from Dur-A-Flex. The Cryl-A-Chip floor is the perfect answer because: It is seamless and therefore easy to clean, available in bright colors, minimal downtime due to the fact that the system cures in 1 hour and has a long service life.



CRYL-A-FLEX

Applications

Product: Cryl-A-Chip
Customer: McDonalds, Mesa, AZ
Industry: Fast Food, Play Land
Date: August 2000

PROBLEM:

The 1,000 SF play land area rubber tile floor had failed, was lifting and a safety hazard. The floor was also difficult to keep clean and all the seams were dirty.

SOLUTION:

The solution is to remove the existing tile floor and install a Cryl-A-Chip (MMA) floor from Dur-A-Flex. The Cryl-A-Chip floor is the perfect answer because: It is seamless and therefore easy to clean, available in bright colors, minimal downtime due to the fact that the system cures in 1 hour and has a long service life.



CRYL-A-FLEX

Applications

Product: Cryl-A-Chip
Customer: Jayco, Inc., Middlebury, IN
Industry: Manufacture Motorhomes
Date: July 1999

PROBLEM:

In conjunction with a major office remodeling a flooring system was required for the print shop, cafeteria and the hall from the plant which would be durable, easy to clean and aesthetic. Because of the tight schedule the floor had to be completed and ready to use in the shortest time possible.

SOLUTION:

The answer to all the requirements was the Cryl-A-Chip system by Dur-A-Flex. Due to the fact that Cryl-A-Chip is an MMA based material system, 1 hour after being installed it is fully cured and 100 % ready for traffic. The wide variety of colors and combinations resulted in a very beautiful and fully functional floor.



CRYL-A-FLEX Applications

Product: Cryl-A-Chip
Customer: North Grant Park Garage Reconstruction Project, Chicago, IL
Industry: Parking Garage
Date: October 2000

PROBLEM:

A decorative, wear resistant, fluid applied seamless flooring system was required for the lobby/ticket areas in the garage. The 6,500 SF of floor had to be color coordinated for different areas.

SOLUTION:

The MMA based Cryl-A-Chip system was used as it met all the requirements and due to the quick cure, full cure in 1 hour this helped to meet the tight construction schedule.



CRYL-A-FLEX

Applications

Product: Cryl-A-Chip
Customer: United States Post Office, Maryville Station, Phoenix, AZ
Industry: US Government
Date: November 2000

PROBLEM:

The 2,800 SF of glazed quarry tile in the lobby of the Post Office was showing signs of wear and difficult to maintain. The manager wanted a seamless floor (no grout joints), very decorative, high wear resistance and the project had to be done with minimal disruption to the facilities operation.

SOLUTION:

The manager picked the decorative Cryl-A-Chip system. This system has the appearance of terrazzo, is seamless and because it is based on MMA achieves full cure in 1 hour. The fast cure was an important consideration as the public always has access to the postal boxes in the lobby. The complete job including shot blasting for surface preparation was completed in 36 hours.



CRYL-A-FLEX

Applications

Product: Cryl-A-Chip with Cryl-A-Shield Accent Stripes
Customer: Modesto Center Plaza, Modesto, CA
Industry: Convention Center
Date: August 2001

PROBLEM:

The 20 year old 16,100 SF floor of the Harvest Hall is in need of a face-lift. The original stained concrete floor is discolored, difficult to clean and the coating is peeling. The facility managers are looking for a highly decorative and easy to clean floor with a long service life. Therefore prior to the project being let a number of samples are installed from which the Cryl-A-Chip system was chosen. The project also has to be completed in a one-week window.

SOLUTION:

The solution to the problem is MMA resin based systems from Dur-A-Flex, Cryl-A-Chip (Olive Beige) and the Cryl-A-Shield (Stone Gray) for the 18 inch wide accent stripes. The reasons for choosing these systems are: very decorative, tough enough to resist the everyday demands in this environment, easy to keep clean and because the material cures to full strength in one hour the project can be completed on schedule.



CRYL-A-FLEX

Applications

Product: Cryl-A-Chip with Aluminum Oxide
Customer: Inner Harbor, Baltimore, MD
Industry: Mall
Date: April 2001

PROBLEM:

The existing tiles on the second floor patio have deteriorated to the point where the tiles are loose, therefore a safety concern, slippery, difficult to clean and leaking. The 7,000 SF is in need of restoration as quickly as possible with minimal disruption to business.



SOLUTION:

The project consists of removing the red quarry tiles, failed waterproofing membrane and top 2 inch of concrete. A new concrete cap is poured with proper slope to drain and cure for 28 days. The owner's engineer determines that the best long-term solution will be a seamless system, eliminating the problem joints in the tile system. The requirements for the system is that it be seamless, slip-resistant, match the brick red color, suitable for outside applications and have the shortest possible downtime during the installation. The MMA based Cryl-A-Chip system meets all the criteria. To ensure that the necessary slip-resistance is achieved, a white aluminum oxide is broadcast into the first of the two topcoats.



CRYL-A-FLEX

Applications

Product: Cryl-A-Chip SL & Cryl-A-Chip
Customer: The Washington Animal Rescue League,
Washington, DC
Industry: Animal Care
Date: Summer 2006

PROBLEM:

The Washington Animal Rescue League had a vision, to build a facility that is "A New Global Standard for Animal Care". This vision includes light-filled rooms and a tranquil environment not associated with your typical animal shelter with a modern state-of-the-art medical center. The challenge was to expand the existing facility while it was still in operation. And to use a flooring system that would meet the wide demands of such a facility from animal housing, medical treatment and offer an inviting atmosphere for potential adopters.

SOLUTION:

After an extensive search by the owner, it was determined that all of the required criteria could be met with MMA based seamless system from Dur-A-Flex. The system of choice was the very decorative chip system with colors to compliment other colors being used. A combination of chip system was used, a 3/16 inch thick Cryl-A-Chip SL was used in all the medical facility, hallways, and support areas. The double broadcast Cryl-A-Chip was used for the glass walled cage areas as the floors had a very steep slope to drain there. The facility is a show place and a model for others.



CRYL-A-FLEX

Applications

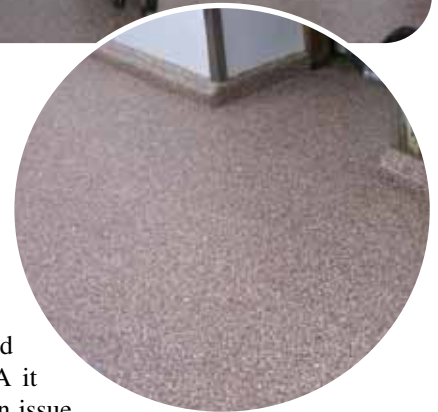
Product: Cryl-A-Chip
Customer: Armando's Market, Chicago, IL
Industry: Grocery Store
Date: March 2007

PROBLEM:

The problem is one that is very typical to the grocery store industry. The 8,800 SF VCT (vinyl composite tile) floor on the retail floor and bathrooms have two and three layers in places. The VCT is breaking up, dull and overall unattractive and can even be considered a trip hazard. The issue is now how to remove and replace this without closing the store and achieve a longer lasting solution.

SOLUTION:

The solution is the Cryl-A-Chip, MMA based system from Dur-A-Flex. This material offers a very attractive finish and saves this store owned over \$7,000.00 each year in maintenance as this floor only requires a simple washing. There is no need to wax, polish and strip the Cryl-A-Chip system. The work was done at nights starting at 10 PM and allowing the store to open at 7 AM the following morning. It took 8 nights to remove the multi-layers of VCT. After the removal the next night the surface was prepared, primed and patched. Due to the unique feature of MMA it completely cures in one hour so there was never an issue with the next day traffic. The second night the broadcast and first topcoat was installed. And the third night the floor was sanded to give the desired texture, smooth in this case and a second topcoat was applied. The other feature of the system that was critical is that MMA material always forms a chemical bond with the previous coat. There is never a cold joint with no time limit between coats.



CRYL-A-FLEX Applications

Product: Cryl-A-Chip & Cryl-A-Shield
(with random chip)
Customer: Get Go, Somerset, PA
(various other locations)
Industry: Gas Station/Convenience Store
Date: July 2003

PROBLEM:

The owner was looking for a flooring system that would meet the demands of a fast track construction schedule, stay within budget and have a very long service life with minimum maintenance. Since the stores were being constructed throughout the winter (with little or no heat), the system had to be capable of being installed over a wide temperature range.

SOLUTION:

The product that met all the requirements was the MMA based seamless flooring from Dur-a-flex. Two systems were used to meet budget requirements. In the retail area and bathrooms, a Cryl-A-Chip floor was used and in the backroom a Cryl-A-Shield coating with a random chip broadcast was installed. The Cryl-A-Chip system is composed of a primer, a double broadcast of decorative colored chips and two topcoats. Cryl-A-Shield is made up of a primer coat, a pigmented topcoat with the random chip broadcast and a single, clear top coat. The schedule was always met as each coat cured fully and was ready to use in less than one hour, MMA based resins can be installed in below freezing temperatures.

